

ACm

Multistage Centrifugal Pumps

Application

- It can be used to transfer clean water or other liquids similar to water in physical and chemical properties. It is suitable for industrial use and urban water supply, pressure boosting for high buildings and fire fighting, garden irrigation, long-distance water transfer, heating ventilation and air controlling, circulation and pressure boosting for cold and hot water, and supporting equipment etc.

Pump

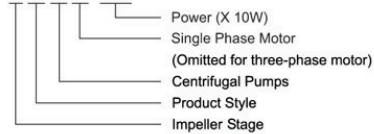
- Cast iron pump body and support under special anti-rust treatment
- AISI 304 shaft
- Max. liquid temperature: +40°C
- Max. suction: +8 m

Motor

- C&U bearing
- Motor with copper winding
- Built-in thermal protector for single phase motor
- Insulation class: F
- Protection class: IPX4
- Max. ambient temperature: +40°C

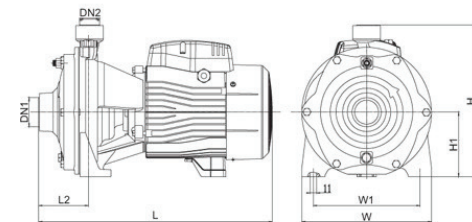
Identification Codes

2 A C m 150



Technical Data

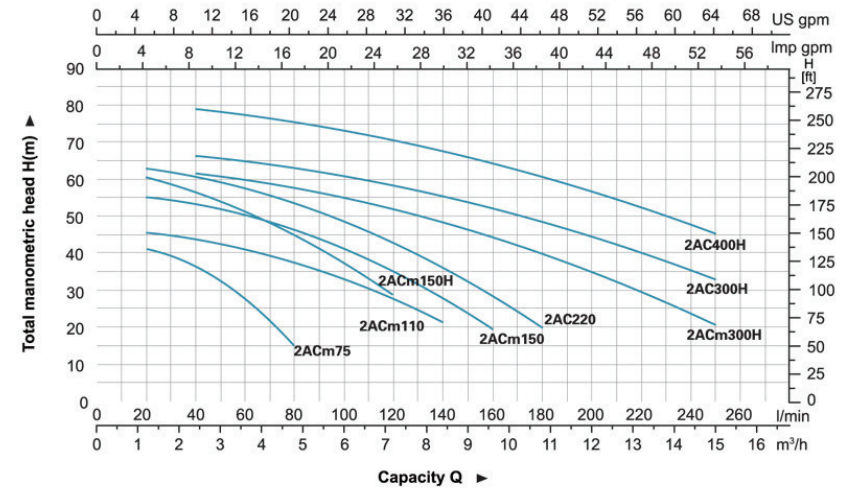
MODEL		POWER		Q (m³/h)		H (m)																			
Single Phase	Three Phase	kW	HP	Q (l/min)	Q (l/min)	0	1.2	1.8	2.4	3	3.6	4.2	4.8	5.4	6	6.6	7.2	7.5	8.4	9.6	10.8	12			
2ACm75	2AC75	0.75	1.0			45	42.5	40	37	33.5	28.5	23	15												
2ACm110	2AC110	1.1	1.5			47	46	45	44	43	41.5	38	35.5	33	30.5	28	26	22							
2ACm150	2AC150	1.5	2			57.5	55.5	54.5	53.5	52	50.5	47	44.5	41.5	38.5	35	33	28	20						
2ACm150H	2AC150H	1.5	2			63.5	60.5	58.5	56.5	54	51.5	48.5	45	41	37.5	33.5	29	27	19.5						
----	2AC220	2.2	3			65	63	62	61	59.5	58	54	51.5	49	46	43	41	36	28.5	20.5					
2ACm300H	----	3	4			65			62	61	60	58	56.5	55	53.5	52.5	52	48.5	44.5	40	35	21			
----	2AC300H	3	4			70			67	66	65	63	62	61	59.5	59	58.5	55.5	52	49	45	33			
----	2AC400H	4	5.5			82			79.5	78.5	77.5	75.5	74.5	73.5	72	71	70.5	67.5	64.5	61	57	45.5			



Dimension

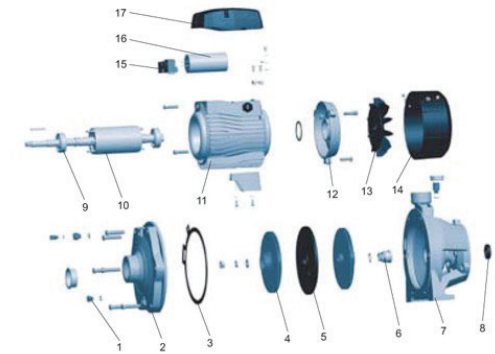
Model	DN1	DN2	L (mm)	W (mm)	H (mm)	L ₁ (mm)	W ₁ (mm)	H ₁ (mm)
2ACm75	1 1/4"	1"	336	181	231	72	145	100
2ACm110	379		200	225	71	162	93	
2ACm150	400		225	262	80	185	112	
2AC220	1 1/2"	1 1/4"	480	281	311	63	234	132
2ACm150H								
2ACm300H								
2AC300H								
2AC400H								

Hydraulic Performance Curve



Materials Table

No.	Part	Material
1	Drain plug	HP69-1
2	Pump body	HT200
3	Gasket	NBR
4	Impeller	HP69-1
5	Bracket cover	HT200
6	Mechanical seal	Carbon/ceramic
7	Support	HT200
8	Oil seal	
9	Bearing	
10	Rotor	
11	Stator	
12	End plate	ZL102
13	Fan	PP
14	Fan cover	PP
15	Terminal board	PC
16	Capacitor	
17	Capacitor box	ABS



Package Information

Model	GW (Kgs)	L (mm)	W (mm)	H (mm)	Quantity (PCS/20 TEU)
2ACm75	15	385	215	270	1200
2ACm110	21	430	234	274	833
2ACm150	27.5	440	254	299	636
2AC220	27.8	440	254	299	629
2ACm150H	27.5	440	254	299	636
2ACm300H	51.9	510	318	355	337
2AC300H	51.5	510	318	355	340
2AC400H	52.4	510	318	355	334