



Application

- Can be used to transfer clean water or other liquids similar to water in physical and chemical properties
- Suitable for industrial use and urban water supply, pressure boosting for high buildings and fire fighting, garden irrigation, long-distance water transfer, heating ventilation and air controlling, circulation and pressure boosting for cold and hot water, and supporting equipment etc.

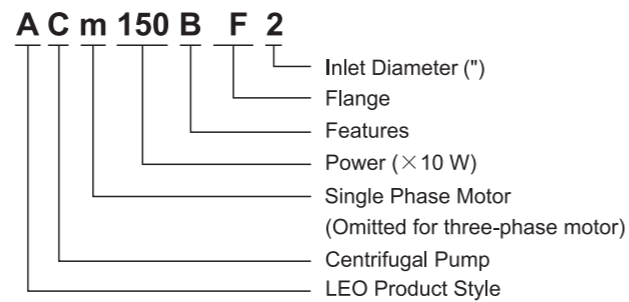
Pump

- Cast iron pump body and support under special anti-rust treatment
- AISI 304 shaft
- Max. liquid temperature: +40°C
- Max. suction: +8 m

Motor

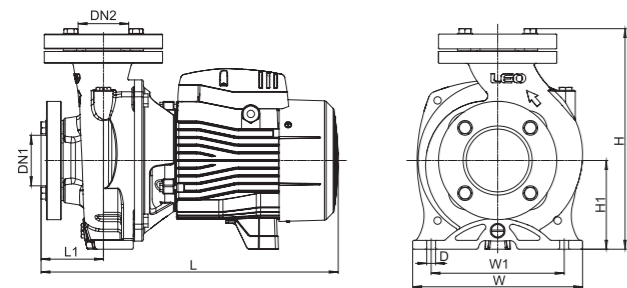
- C&U bearing
- Motor with copper winding
- Built-in thermal protector for single phase motor (≤1.5 kW)
- Insulation class: F
- Protection class: IPX4
- Max. ambient temperature: +40°C
- IE 2 motor (Three phase, power ≥ 0.75kW)

Identification Codes



Technical Data

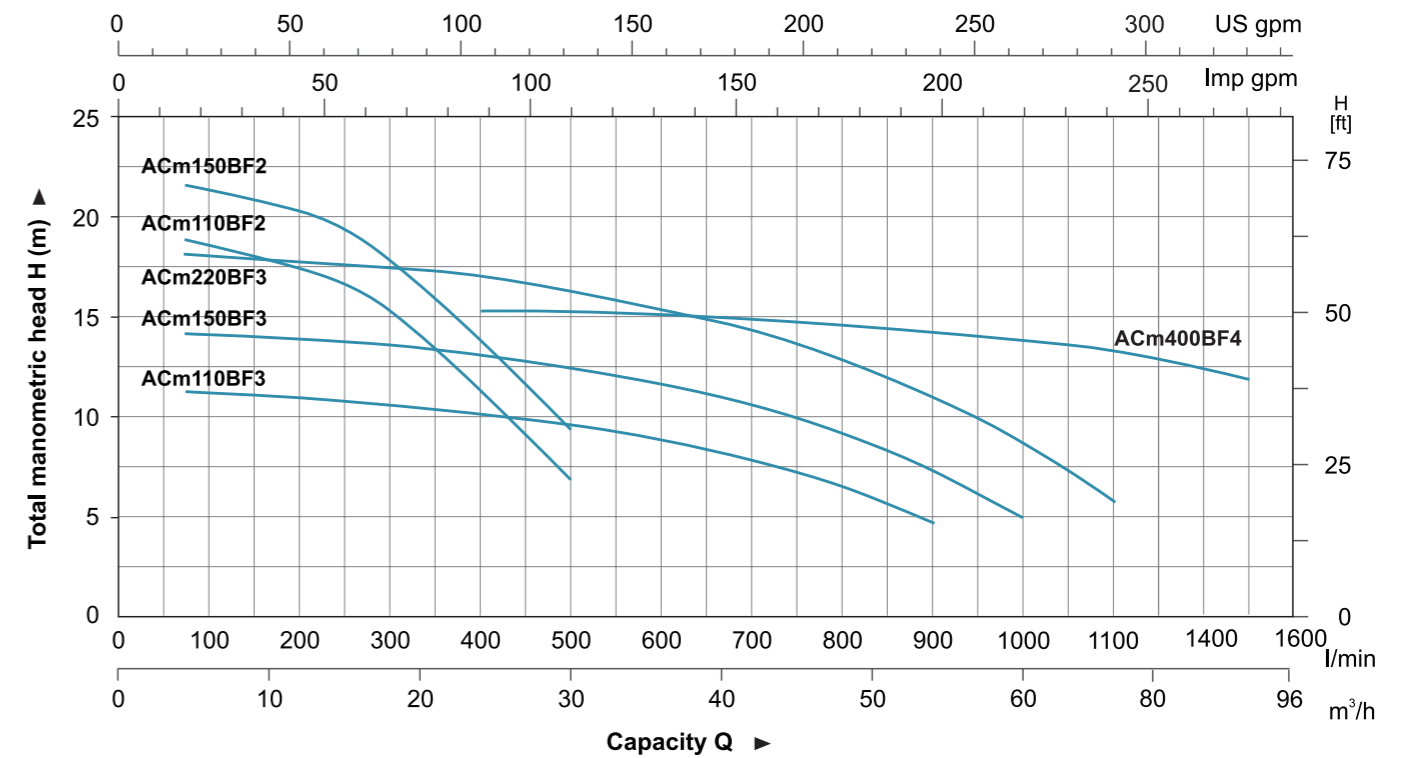
| MODEL | | POWER | | Q (m³/h) | | | | | | | | | | | | | | | |
|--------------|-------------|-------|-----|-----------|------|------|------|------|------|------|------|------|------|------|------|------|------|------|--|
| Single Phase | Three Phase | kW | HP | 0 | 12 | 18 | 24 | 30 | 36 | 42 | 48 | 54 | 60 | 66 | 72 | 84 | 96 | | |
| | | | | Q (l/min) | 0 | 200 | 300 | 400 | 500 | 600 | 700 | 800 | 900 | 1000 | 1100 | 1200 | 1400 | 1600 | |
| ACm110BF2 | AC110BF2 | 1.1 | 1.5 | H (m) | 19.5 | 18.5 | 16.5 | 13 | 8.5 | - | - | - | - | - | - | - | - | | |
| ACm110BF3 | AC110BF3 | 1.1 | 1.5 | | 12.5 | 12.5 | 21.1 | 11.5 | 10.5 | 9.5 | 8.4 | 7.1 | 5.5 | - | - | - | - | | |
| ACm150BF2 | AC150BF2 | 1.5 | 2 | | 22 | 20.5 | 18.3 | 14.5 | 9.5 | - | - | - | - | - | - | - | - | | |
| ACm150BF3 | AC150BF3 | 1.5 | 2 | | 14.5 | 14.3 | 14 | 13.5 | 12.8 | 12 | 11.2 | 9.9 | 8.4 | 6 | - | - | - | | |
| ACm220BF3 | AC220BF3 | 2.2 | 3 | | 17.5 | 17.3 | 17.1 | 16.5 | 16 | 15.2 | 14.2 | 14.2 | 11.7 | 10 | 7.2 | - | - | | |
| ACm400BF4 | AC400BF4 | 4 | 5.5 | | 16.5 | - | - | 16 | 15.8 | 15.5 | 15.3 | 15.3 | 15 | 14.7 | 14.4 | 14 | 13.2 | 12.1 | |



Dimension

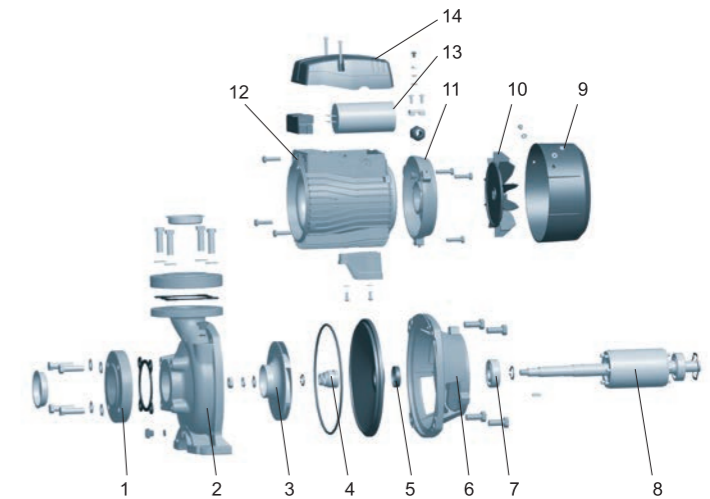
| Model | DN1 | DN2 | L (mm) | W (mm) | H (mm) | L _i (mm) | W _i (mm) | H _i (mm) | D (mm) |
|-----------|-----|-----|--------|--------|--------|---------------------|---------------------|---------------------|--------|
| ACm110BF2 | 2" | 2" | 392 | 206 | 270 | 64.5 | 166 | 112 | 10 |
| ACm110BF3 | 3" | 3" | 403 | 230 | 300 | 86 | 180 | 120 | 12 |
| ACm150BF2 | 2" | 2" | 392 | 206 | 270 | 64.5 | 166 | 112 | 10 |
| ACm150BF3 | 3" | 3" | 403 | 230 | 300 | 86 | 180 | 120 | 12 |
| ACm220BF3 | 3" | 3" | 471 | 230 | 300 | 86 | 180 | 120 | 12 |
| ACm400BF4 | 4" | 4" | 593 | 281.5 | 398 | 120.5 | 206 | 160 | 16 |

Hydraulic Performance Curves



Materials Table

| No. | Part | Material |
|-----|-----------------|-------------------------|
| 1 | Flange | HT200 |
| 2 | Pump body | HT200 |
| 3 | Impeller | AISI 304/Brass HT200 |
| 4 | Mechanical seal | Carbon/Ceramic |
| 5 | Oil seal | |
| 6 | Support | HT200 |
| 7 | Bearing | |
| 8 | Rotor | |
| 9 | Fan cover | PP |
| 10 | Fan | PP |
| 11 | Rear cover | HT200 |
| 12 | Stator | |
| 13 | Capacitor | |
| 14 | Terminal box | PC/ABS |



Package Information

| Model | GW (Kgs) | L (mm) | W (mm) | H (mm) | Quantity (PCS/20 TEU) |
|-----------|----------|--------|--------|--------|-----------------------|
| ACm110BF2 | 22.2 | 414 | 230 | 300 | 900 |
| ACm150BF2 | 24 | 414 | 230 | 300 | 833 |
| ACm110BF3 | 31.5 | 433 | 255 | 332 | 634 |
| ACm150BF3 | 32.5 | 433 | 255 | 332 | 615 |
| ACm220BF3 | 40 | 522 | 288 | 332 | 500 |
| ACm400BF4 | 72.8 | 658 | 330 | 457 | 204 |

